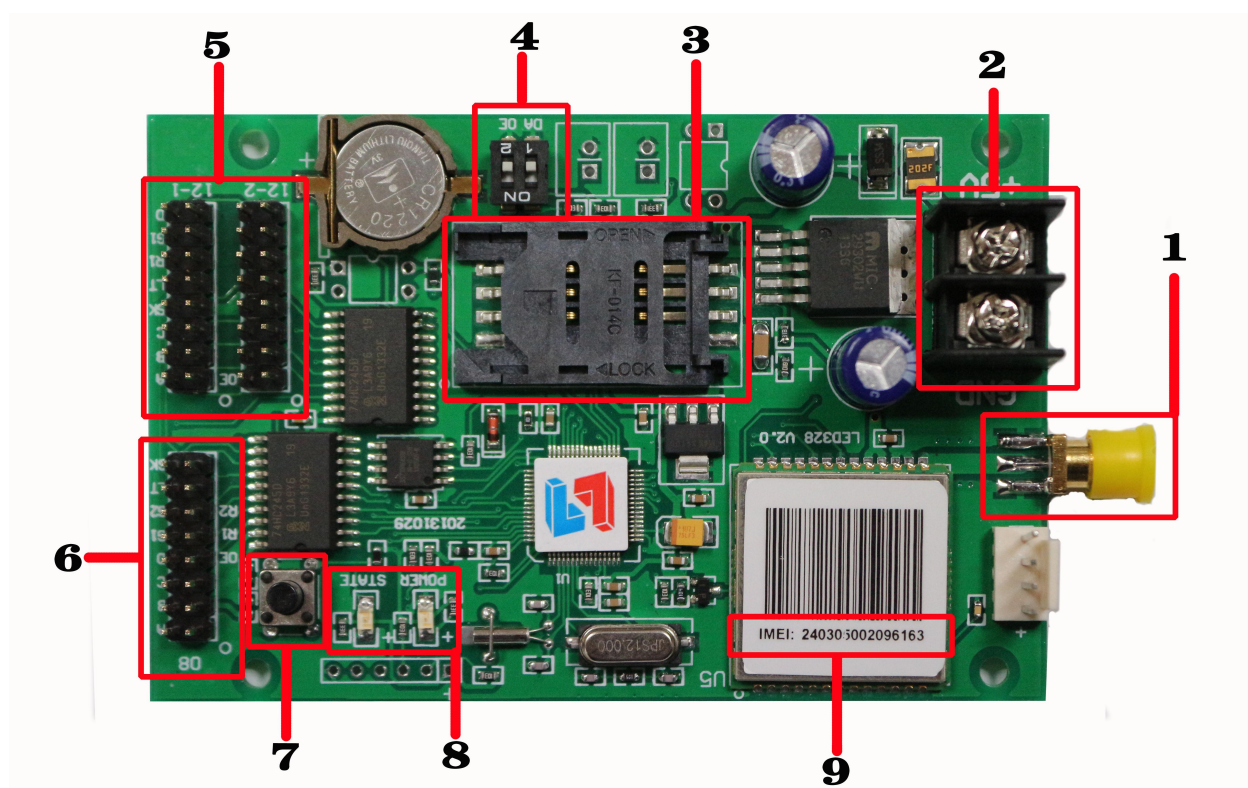


# Specification for G1-GPRS Display Controllers

## Hardware:



Item	Interface Name	Description
1	GMS antenna interface	Connect to the antenna
2	5V Power supply	Voltage range support 3.5V-6V
3	SIM card slot	Put the SIM card inside tray
4	Dial switch	Adjust the baud-rate
5	HUB12 Port	Connect to modules with HUB12 port
6	HUB08 Port	Connect to modules with HUB08 port
7	Multi-function button	1.Test LED panel 2.Reset to defaults
8	Status indicator	Indicating working state
9	IMEI Number	Same with the terminal number in server

**Parameter:**

<b>PRODUCT MODEL</b>	G1 GPRS Controller
<b>FOR Screens</b>	3.75,7.62, P10 to P20
<b>PIXEL(Resolution):</b>	Single color :32(H)*256(W) , Double color 8K ,32(H)*128(W)
<b>COLOR:</b>	RED, GREEN, YELLOW
<b>USAGE</b>	Outdoor, Indoor, Semi-outdoor
<b>Communication Mode</b>	Wireless GPRS
<b>HUB Port No.</b>	1*(HUB08), 2*(HUB12)
<b>Software Function</b>	Multi-program/multi-areas' display
<b>Program No.</b>	Support 128 programs, 16 areas for each program
<b>Area Type</b>	Text/Image/ digital clock/analogue clock /timer/animation
<b>Frame Mode</b>	Most advanced colorful / magic graphics frame/Area frame
<b>Time Mode</b>	Analogue clock/digital clock; Positive timing and counting-down timer
<b>Date Mode</b>	MM/DD/YY, YYYY-MM-DD, DD/MM/YYYY
<b>Remote control</b>	Remote control by GPRS WEB Server
<b>Brightness Adjustment</b>	Yes
<b>Power on/off Mode</b>	Auto powered on/off and timing powered on
<b>Voltage</b>	5V(3.5V~6.5V )
<b>Maximum power</b>	≤1.5W
<b>Temperature</b>	-40°C~85°C